

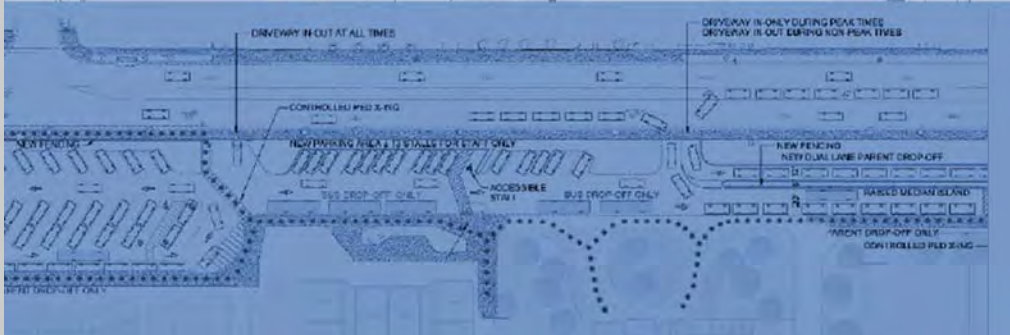


A.G. CURRIE MIDDLE SCHOOL

GBA
TUSTIN UNIFIED SCHOOL DISTRICT



SCHEMATIC



DESIGN

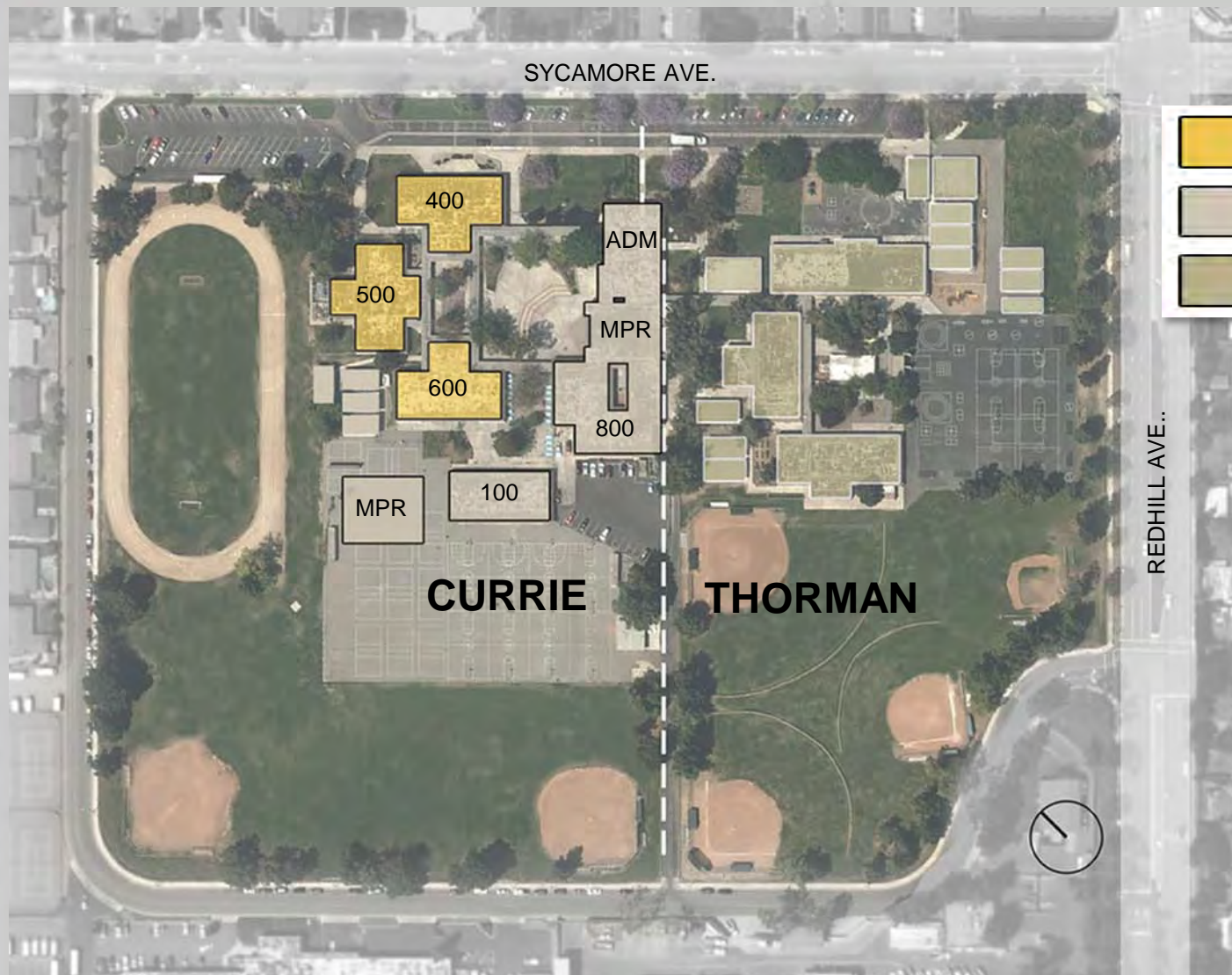
A.G. CURRIE MIDDLE SCHOOL


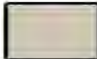
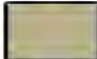
BUILDINGS
400, 500, & 600



Observational Site Plan

GBA
TUSTIN UNIFIED SCHOOL DISTRICT



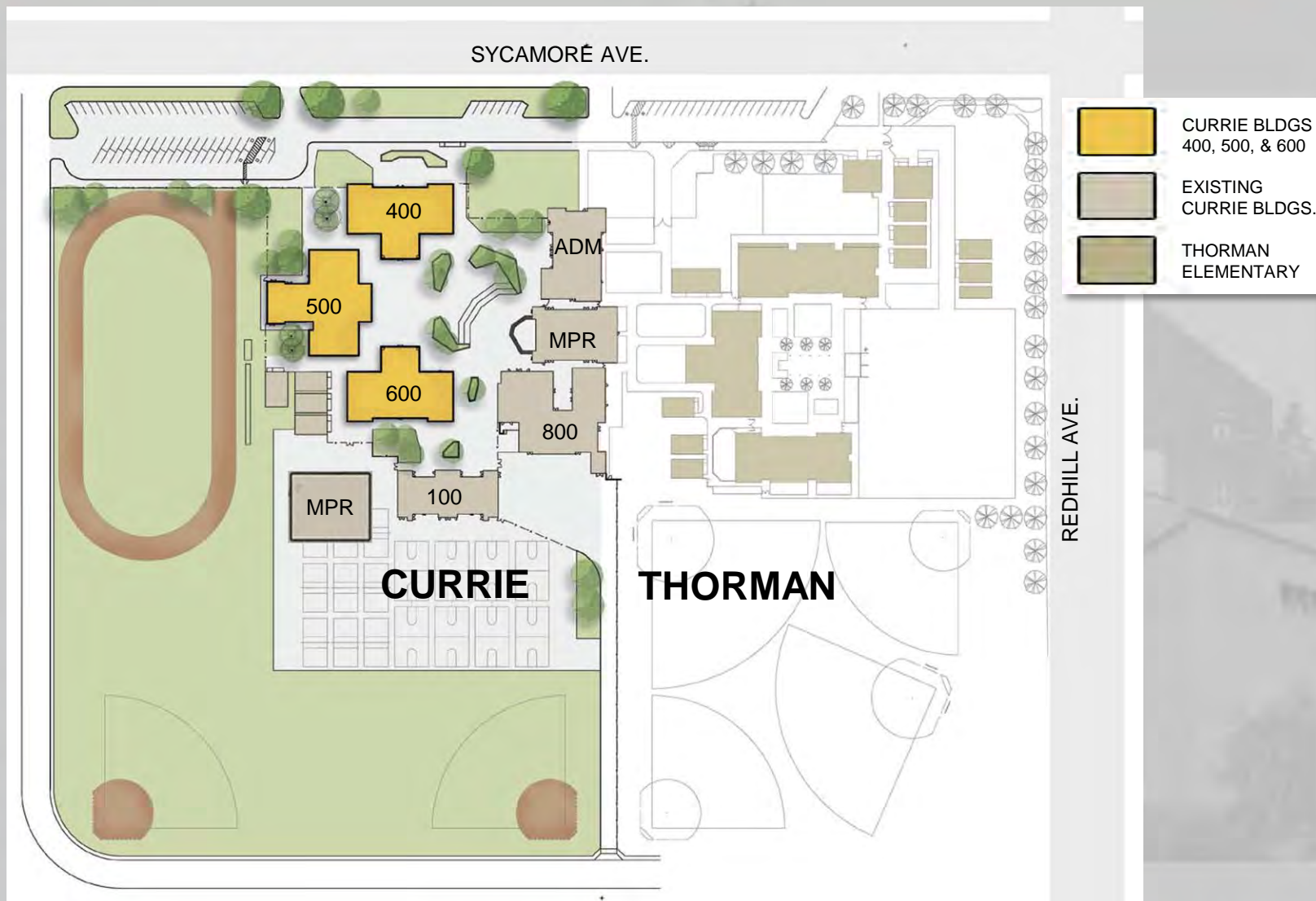
-  CURRIE BLDGS
400, 500, & 600
-  EXISTING
CURRIE BLDGS.
-  THORMAN
ELEMENTARY



Existing Campus Site Plan

TUSTIN UNIFIED SCHOOL DISTRICT

GBA

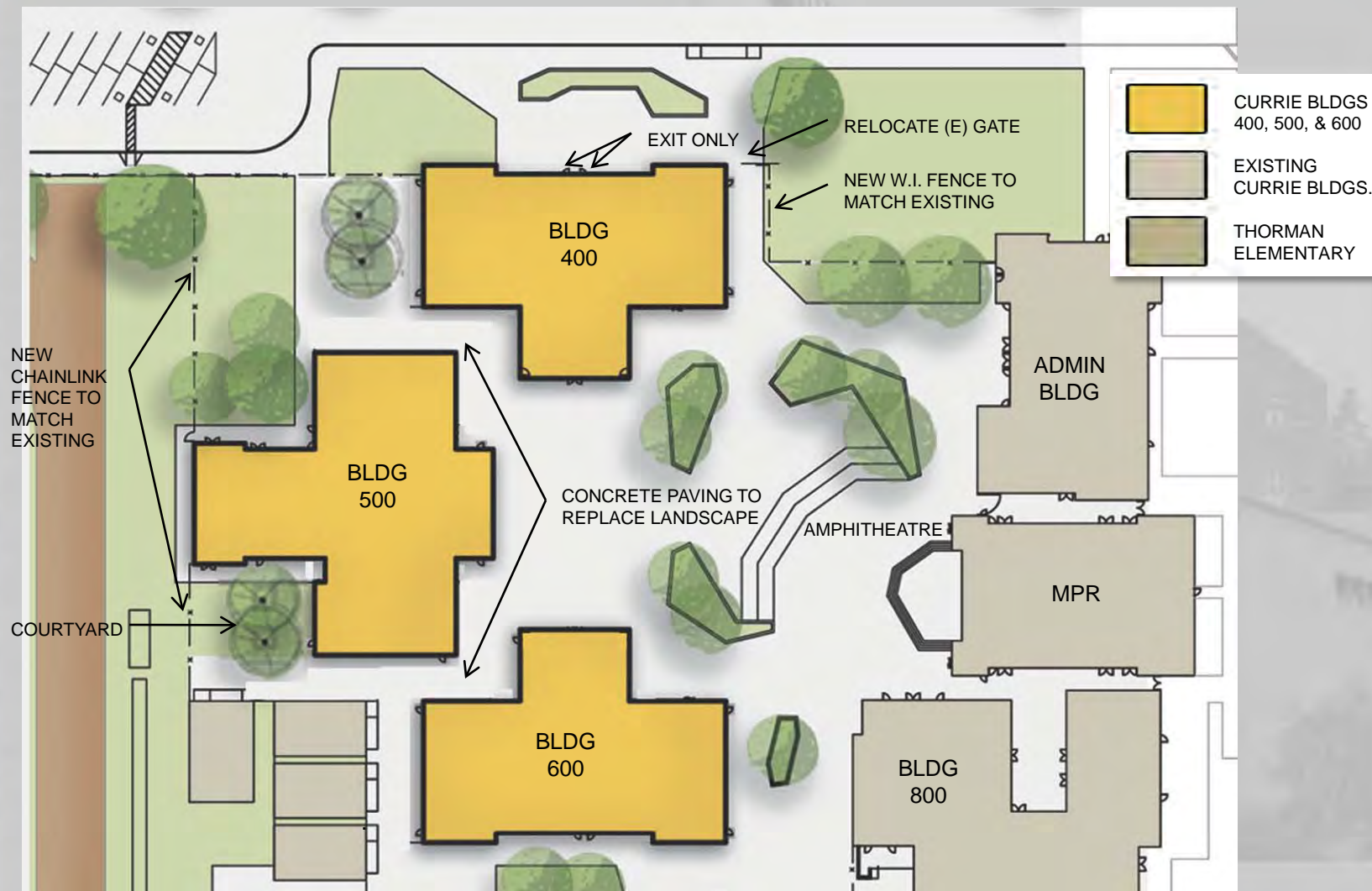




Enlarged Site Plan

GBA

TUSTIN UNIFIED SCHOOL DISTRICT

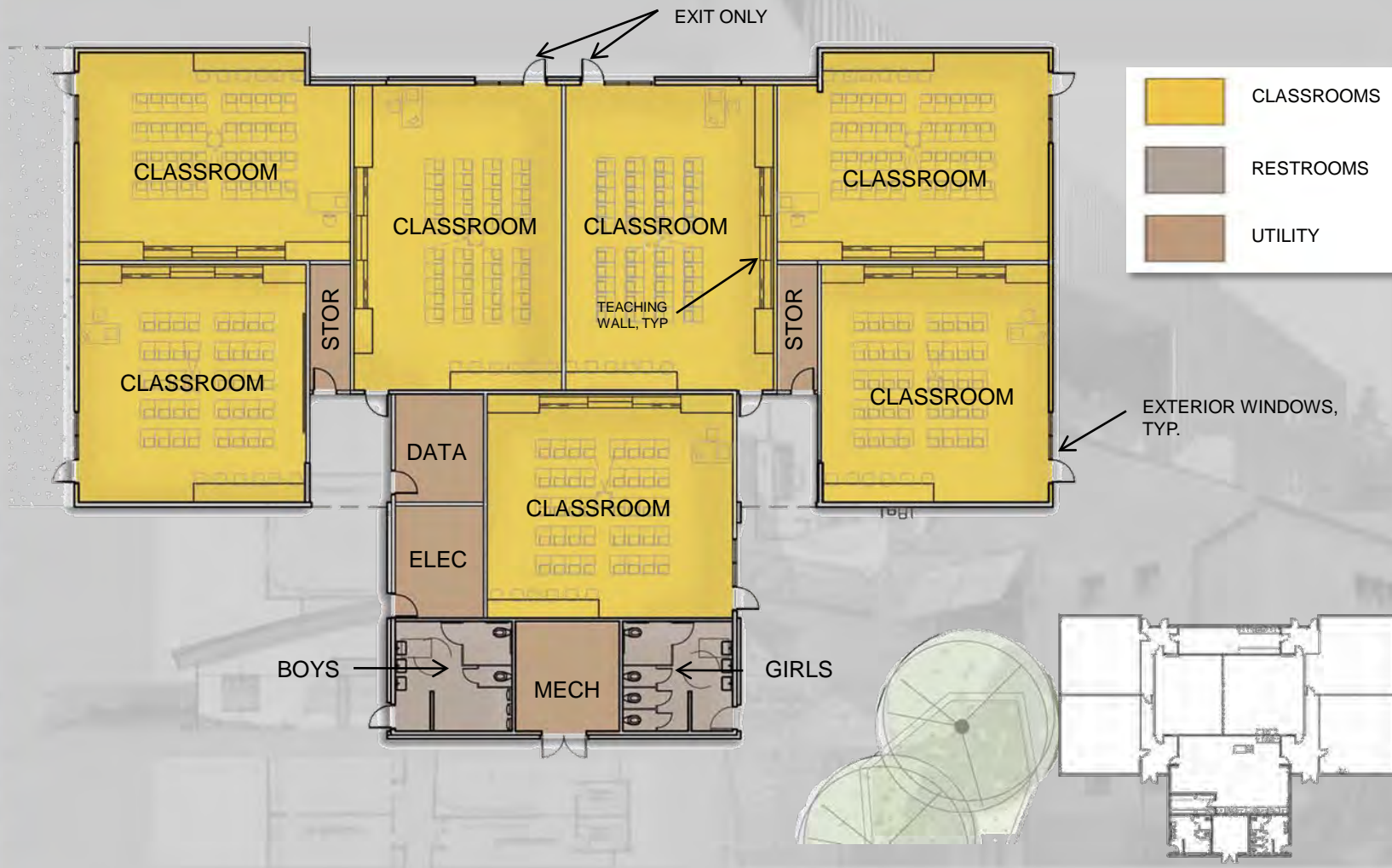




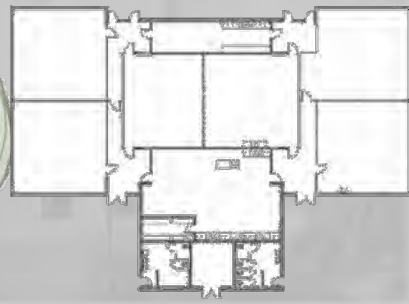
Building 400

GBA

TUSTIN UNIFIED SCHOOL DISTRICT



	CLASSROOMS
	RESTROOMS
	UTILITY



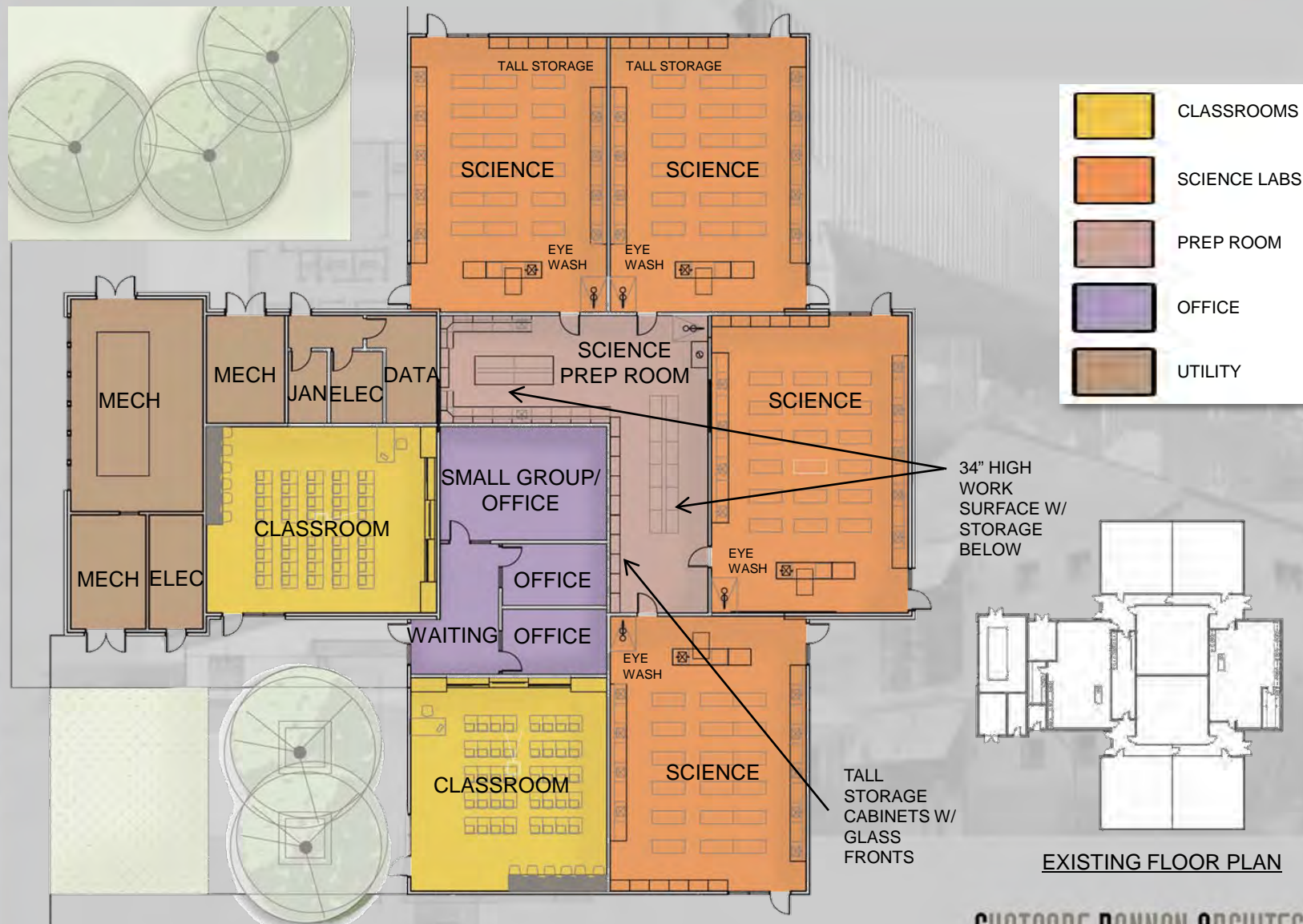
EXISTING FLOOR PLAN








Building 500

GBA

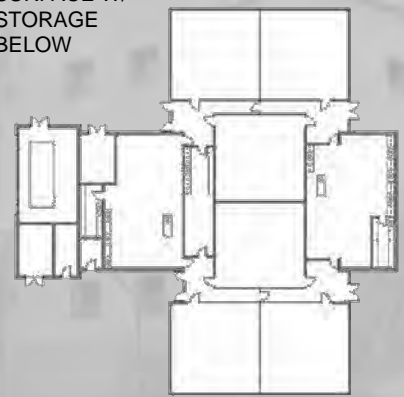
TUSTIN UNIFIED SCHOOL DISTRICT



-  CLASSROOMS
-  SCIENCE LABS
-  PREP ROOM
-  OFFICE
-  UTILITY

34" HIGH
WORK
SURFACE W/
STORAGE
BELOW

TALL
STORAGE
CABINETS W/
GLASS
FRONTS

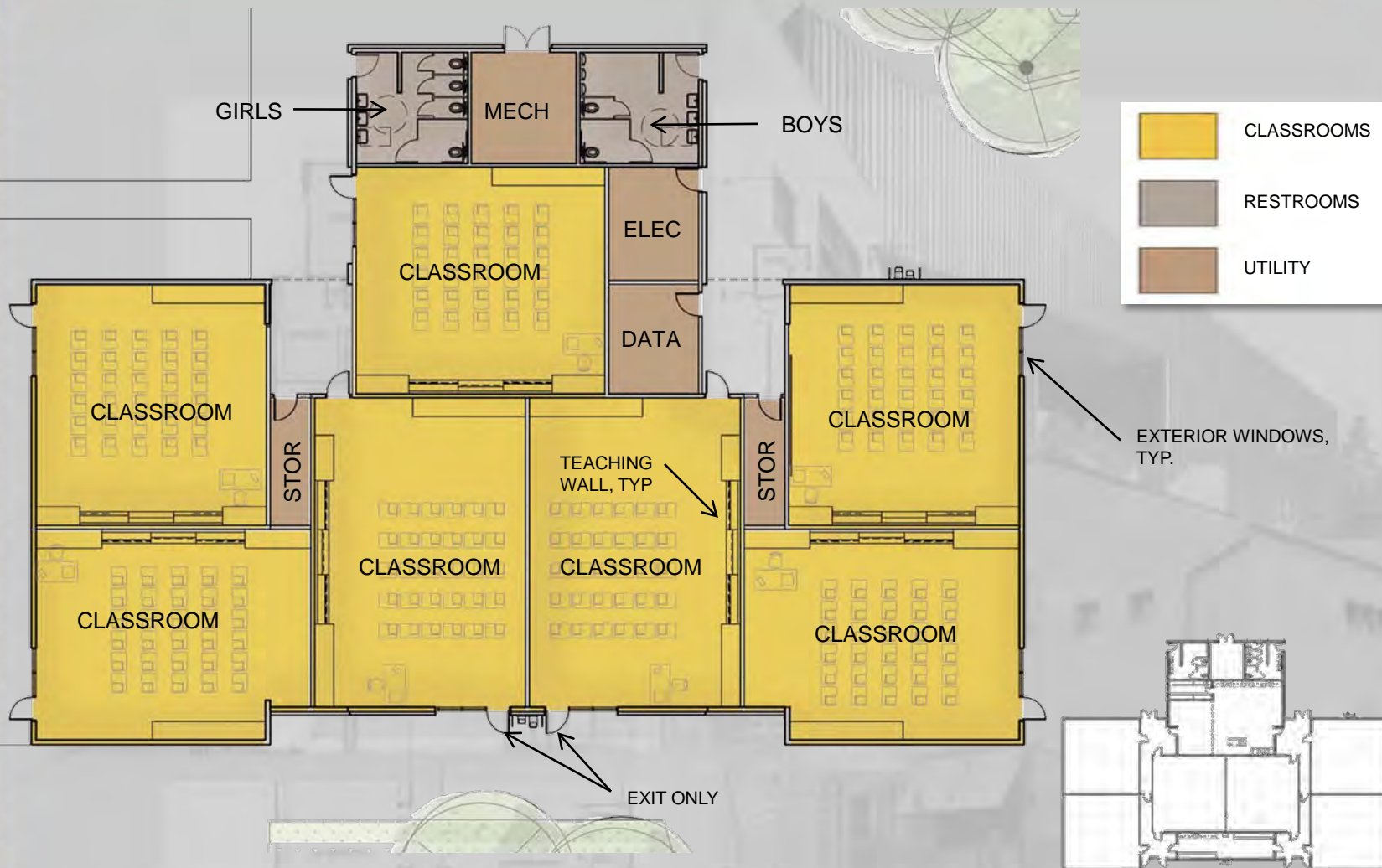


EXISTING FLOOR PLAN

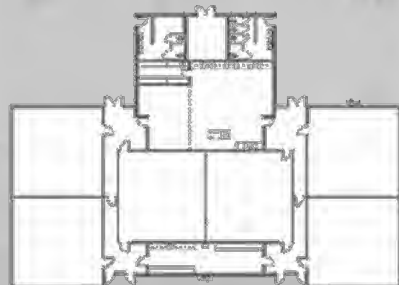


Building 600

GBA
TUSTIN UNIFIED SCHOOL DISTRICT



	CLASSROOMS
	RESTROOMS
	UTILITY



EXISTING FLOOR PLAN



Exterior Windows Study

AXIOMATIC – ENTRY OF NATURAL LIGHT INTO BUILDING 400

TUSTIN UNIFIED SCHOOL DISTRICT

GBA



Evidence suggests improved learning outcomes from spaces that have daylight as the predominant source of lighting.

- ❑ It can reduce energy consumption (USA "most schools spend more on energy than books")
- ❑ Sick building syndrome rarely seems to occur in buildings with windows, which provide views and natural ventilation.
- ❑ Natural light should always be the major source of lighting during daylight hours. It can be from windows, borrowed lighting, or roof lighting.

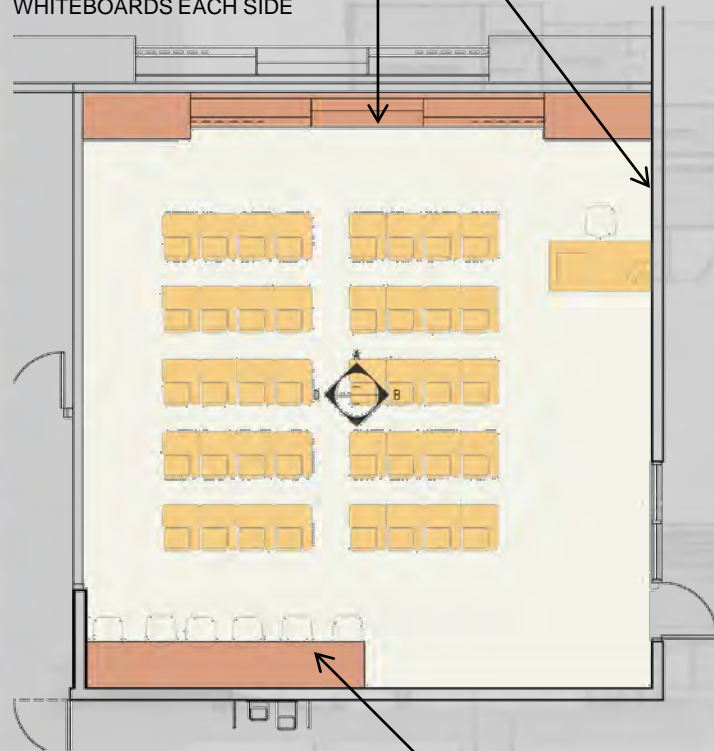


Typical Classroom

GBA
TUSTIN UNIFIED SCHOOL DISTRICT

4'-0" HIGH TACKABLE WALL COVERING, TYPICAL ALL WALLS

TEACHING WALL WITH 5'-0" SMARTBOARD AND WHITEBOARDS EACH SIDE

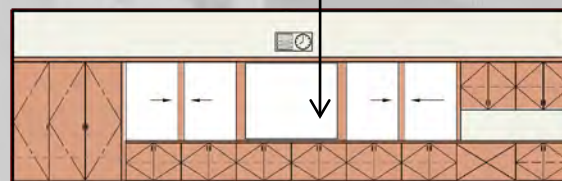


NEW COMPUTER COUNTERTOP, TYPICAL FOR 6 COMPUTER STATIONS

FLOOR PLAN



TEACHING WALL WITH 5'-0" SMARTBOARD AND WHITEBOARDS EACH SIDE



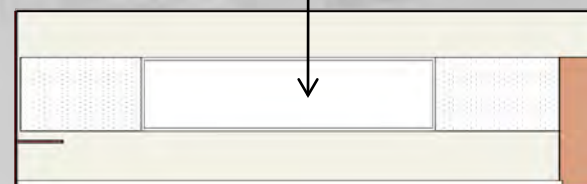
B

EXTERIOR WINDOWS, TYP



C

16'-0" WIDE X 4'-0" WHITEBOARD WITH TACKABLE WALL COVERING EACH SIDE



D

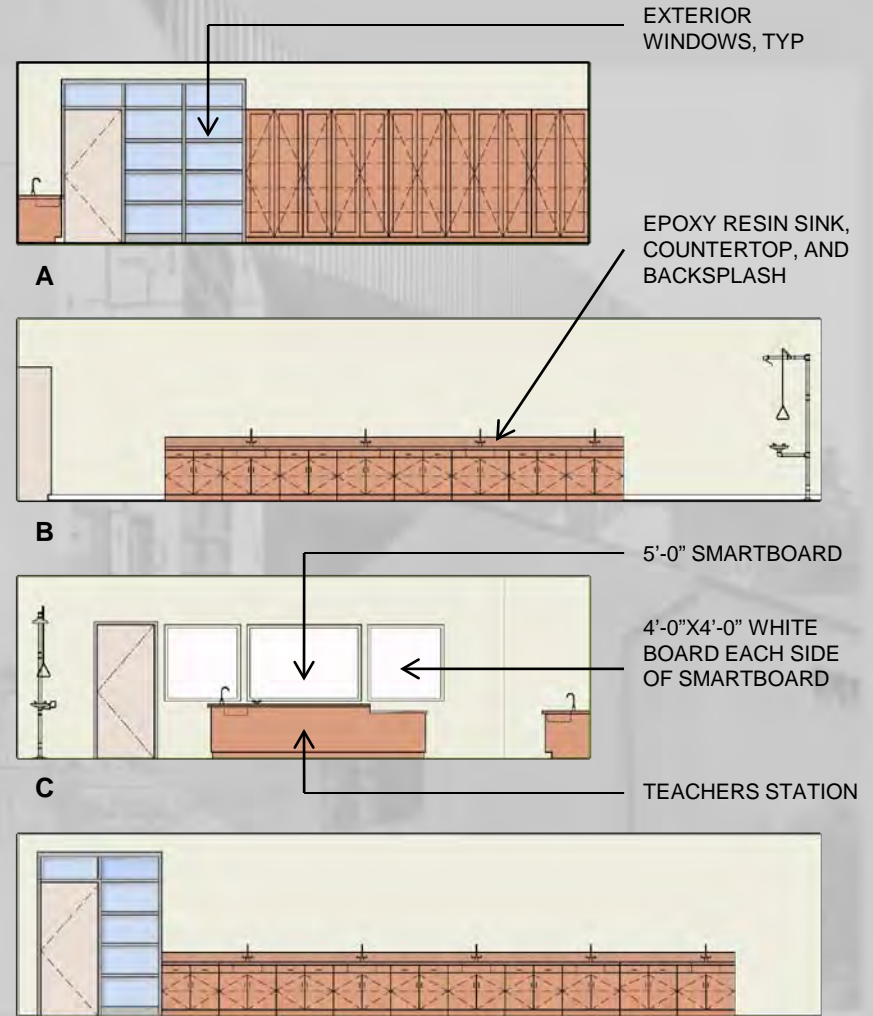
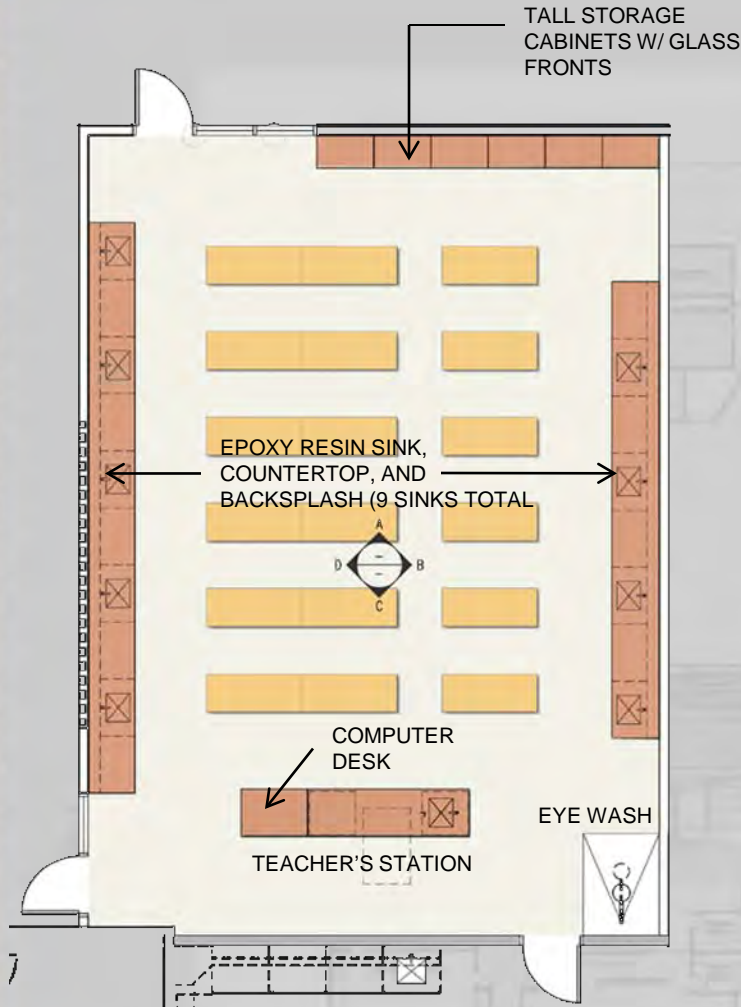
INTERIOR ELEVATIONS



Typical Science Lab

GBA

TUSTIN UNIFIED SCHOOL DISTRICT

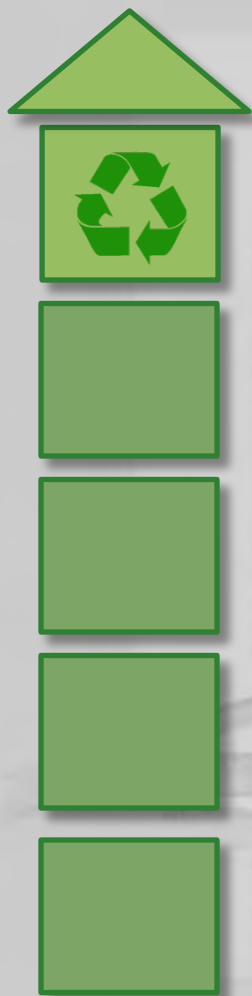




Green Buildings

GBA

TUSTIN UNIFIED SCHOOL DISTRICT



Daylighting and Solar Tubes

Reduced Environmental Impact

- Recycled Content
 - Ceilings
 - Carpet

Dual Glazed Windows

Water Efficient Plumbing Fixtures

Construction Waste Management



A.G. Currie Middle School

GBA

TUSTIN UNIFIED SCHOOL DISTRICT

Schedule

DSA Submittal → January 2011

Construction → June – August 2011

Estimated Construction Cost

Building 400 = \$ 911,773

Building 500 = \$1,296,842

Building 600 = \$ 911,773

Site = \$ 77,034

TOTAL = \$3,197,421

Total Project Cost = \$4,100,000





Ghataode Bannan Architects

GBA

TUSTIN UNIFIED SCHOOL DISTRICT



GHATAODE BANNAN ARCHITECTS