



# A.G. CURRIE MIDDLE SCHOOL

GBA  
TUSTIN UNIFIED SCHOOL DISTRICT



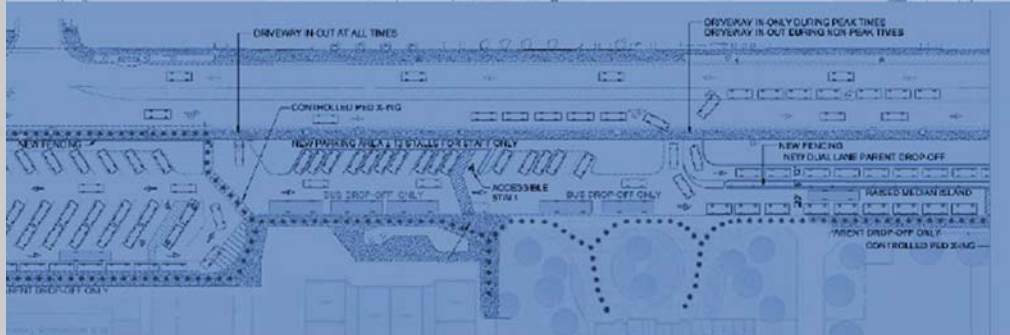
## SCHEMATIC

## DESIGN



### A.G. CURRIE MIDDLE SCHOOL

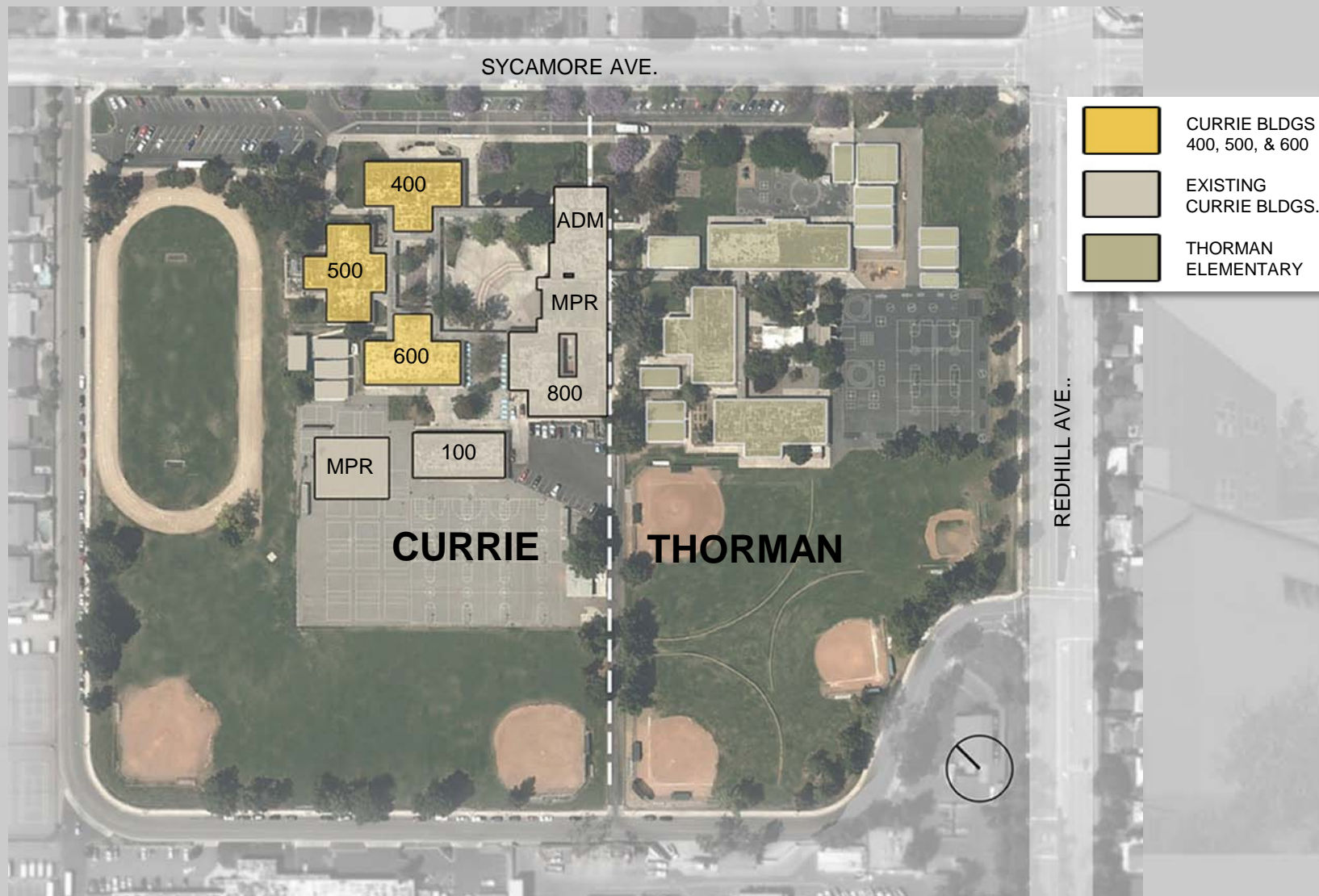
BUILDINGS  
400, 500, & 600





# Observational Site Plan

GBA  
TUSTIN UNIFIED SCHOOL DISTRICT

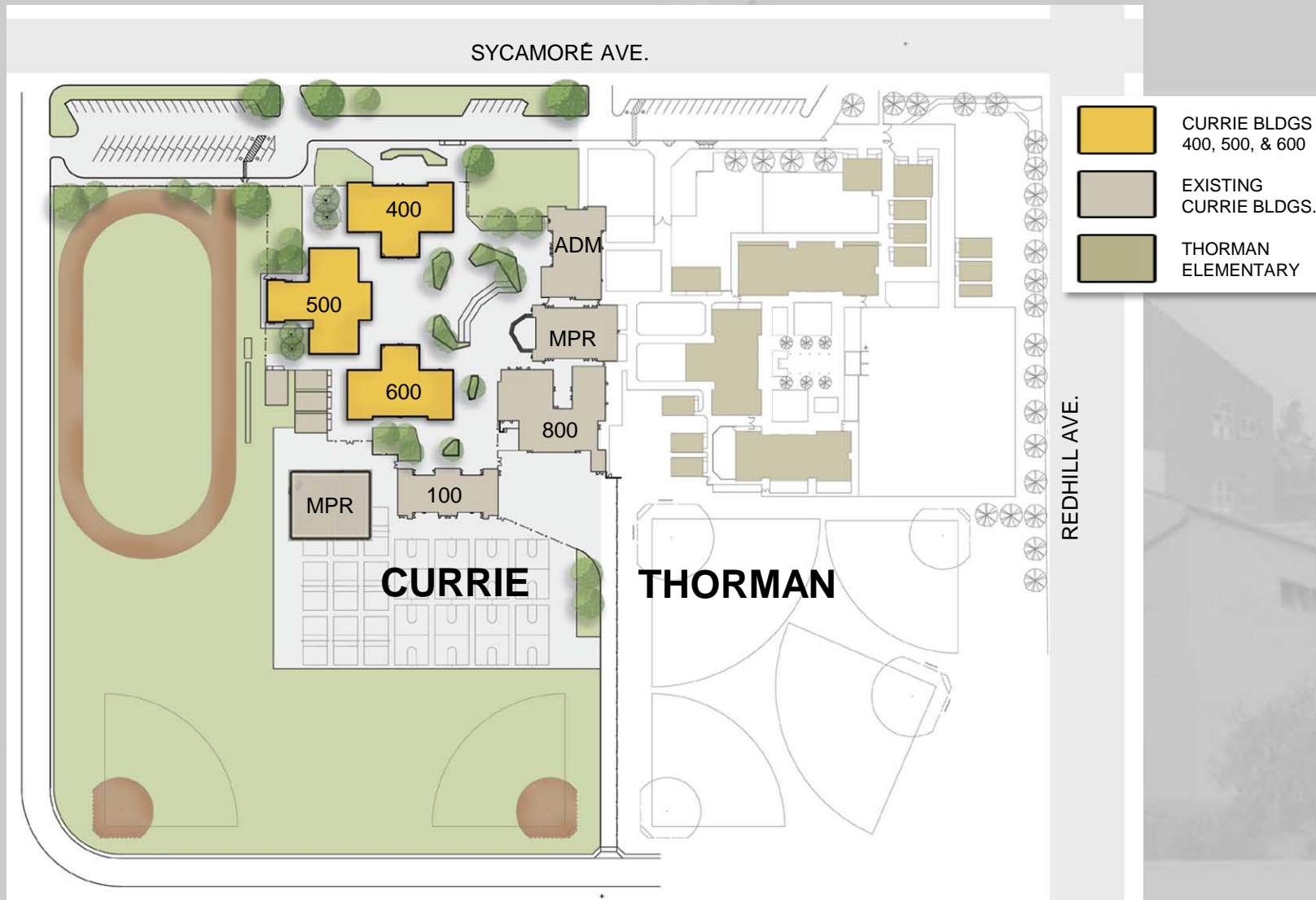




# Existing Campus Site Plan

GBA

TUSTIN UNIFIED SCHOOL DISTRICT

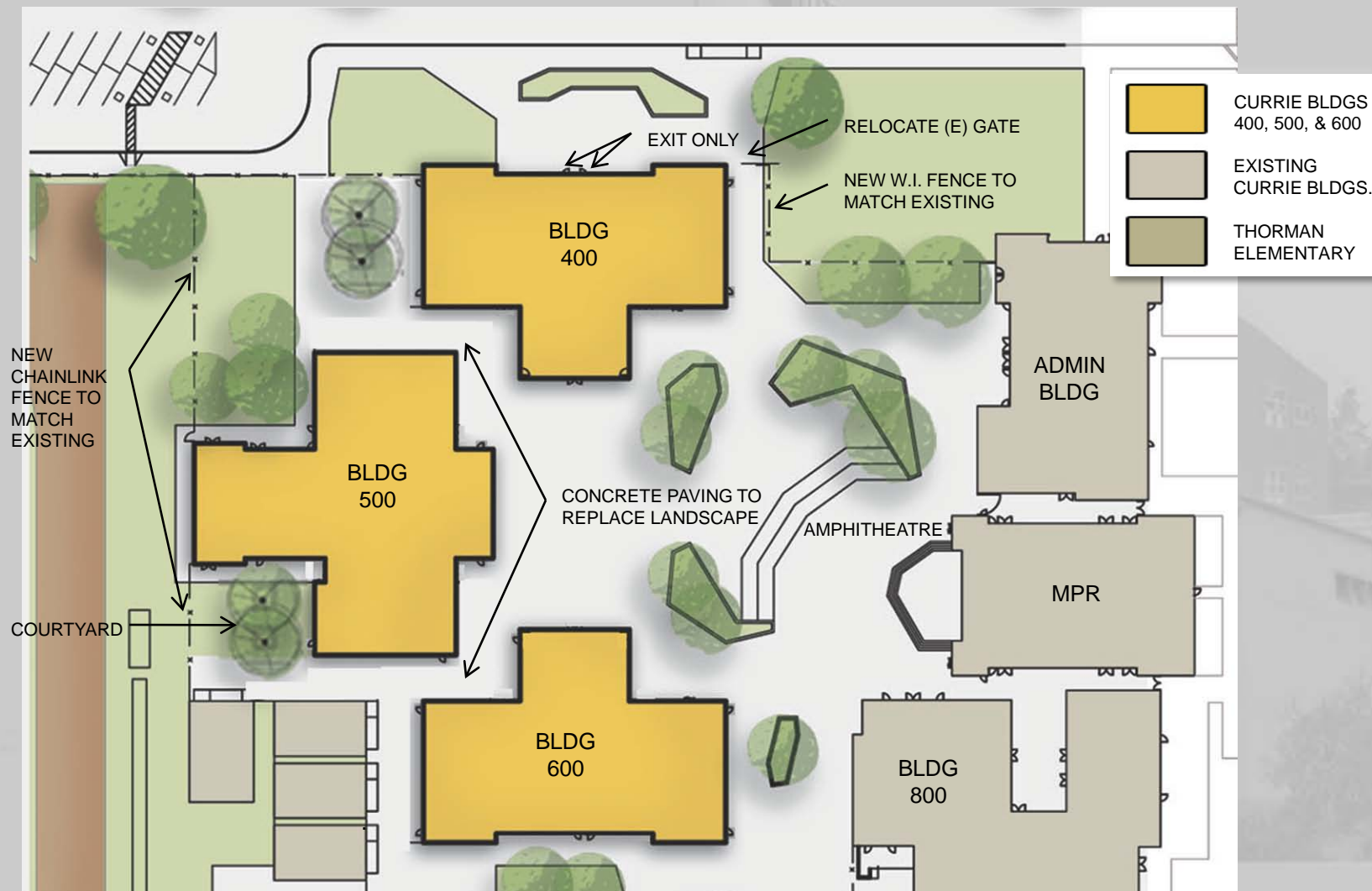




# Enlarged Site Plan

GBA

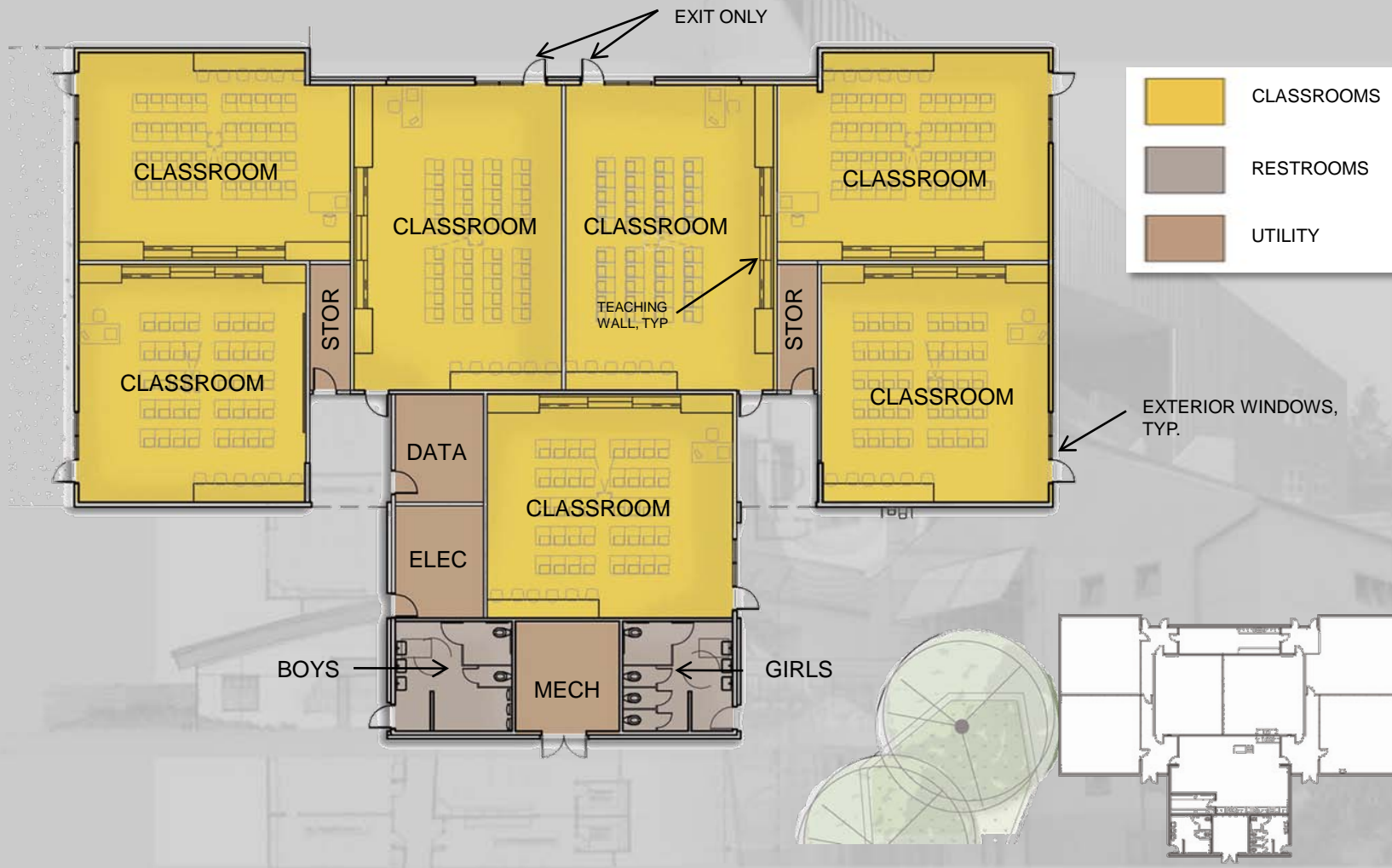
TUSTIN UNIFIED SCHOOL DISTRICT





# Building 400

GBA  
TUSTIN UNIFIED SCHOOL DISTRICT



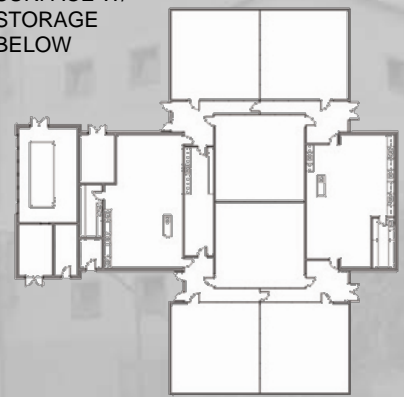
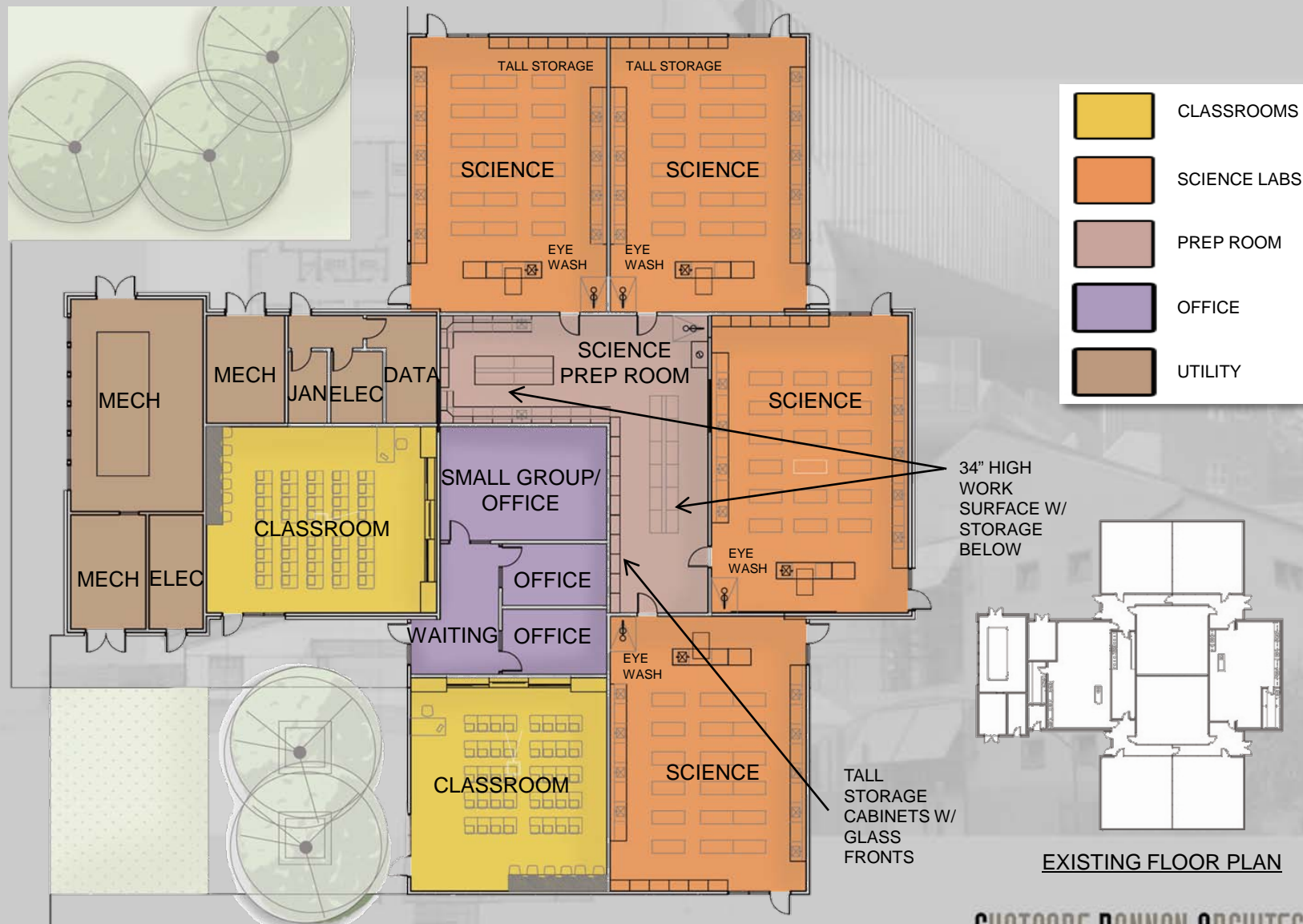
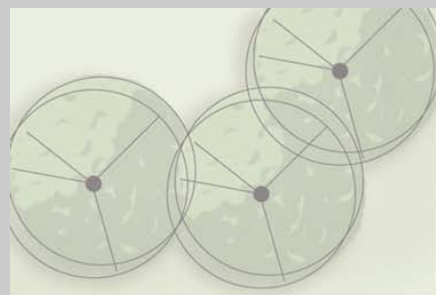
EXISTING FLOOR PLAN



# Building 500

GBA

TUSTIN UNIFIED SCHOOL DISTRICT



EXISTING FLOOR PLAN





# Exterior Windows Study

AXIOMATIC – ENTRY OF NATURAL LIGHT INTO BUILDING 400

GBA

TUSTIN UNIFIED SCHOOL DISTRICT



**Evidence suggests improved learning outcomes from spaces that have daylight as the predominant source of lighting.**

- ❑ It can reduce energy consumption (USA "most schools spend more on energy than books")
- ❑ Sick building syndrome rarely seems to occur in buildings with windows, which provide views and natural ventilation.
- ❑ Natural light should always be the major source of lighting during daylight hours. It can be from windows, borrowed lighting, or roof lighting.



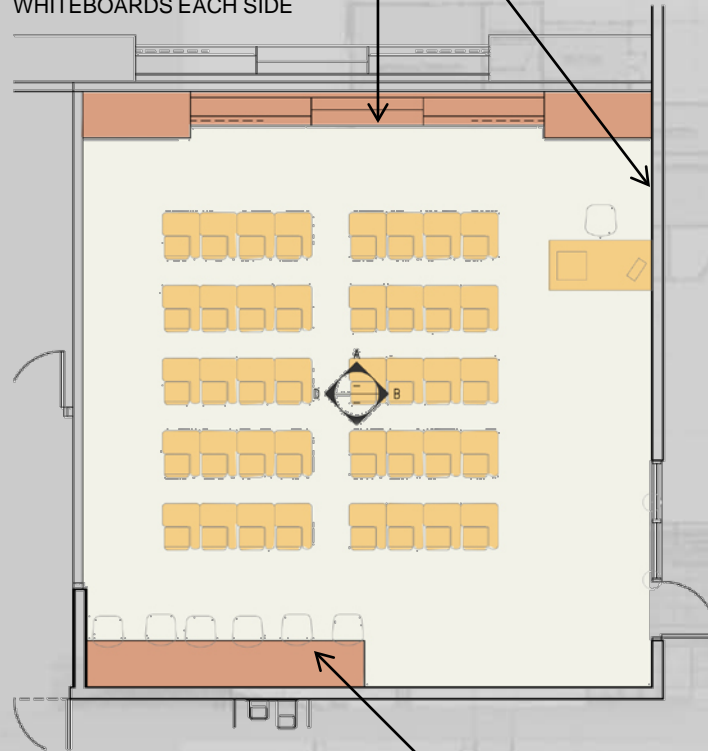
# Typical Classroom

GBA

TUSTIN UNIFIED SCHOOL DISTRICT

4'-0" HIGH TACKABLE WALL COVERING, TYPICAL ALL WALLS

TEACHING WALL WITH 5'-0" SMARTBOARD AND WHITEBOARDS EACH SIDE

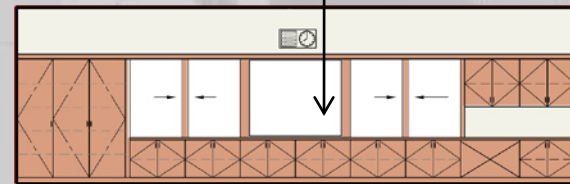


NEW COMPUTER COUNTERTOP, TYPICAL FOR 6 COMPUTER STATIONS

**FLOOR PLAN**

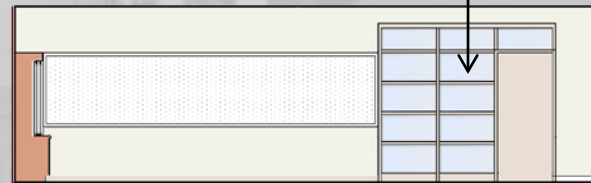


TEACHING WALL WITH 5'-0" SMARTBOARD AND WHITEBOARDS EACH SIDE



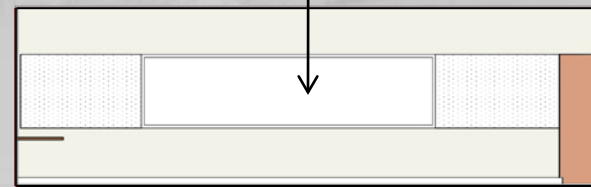
**B**

EXTERIOR WINDOWS, TYP



**C**

16'-0" WIDE X 4'-0" WHITEBOARD WITH TACKABLE WALL COVERING EACH SIDE



**D**

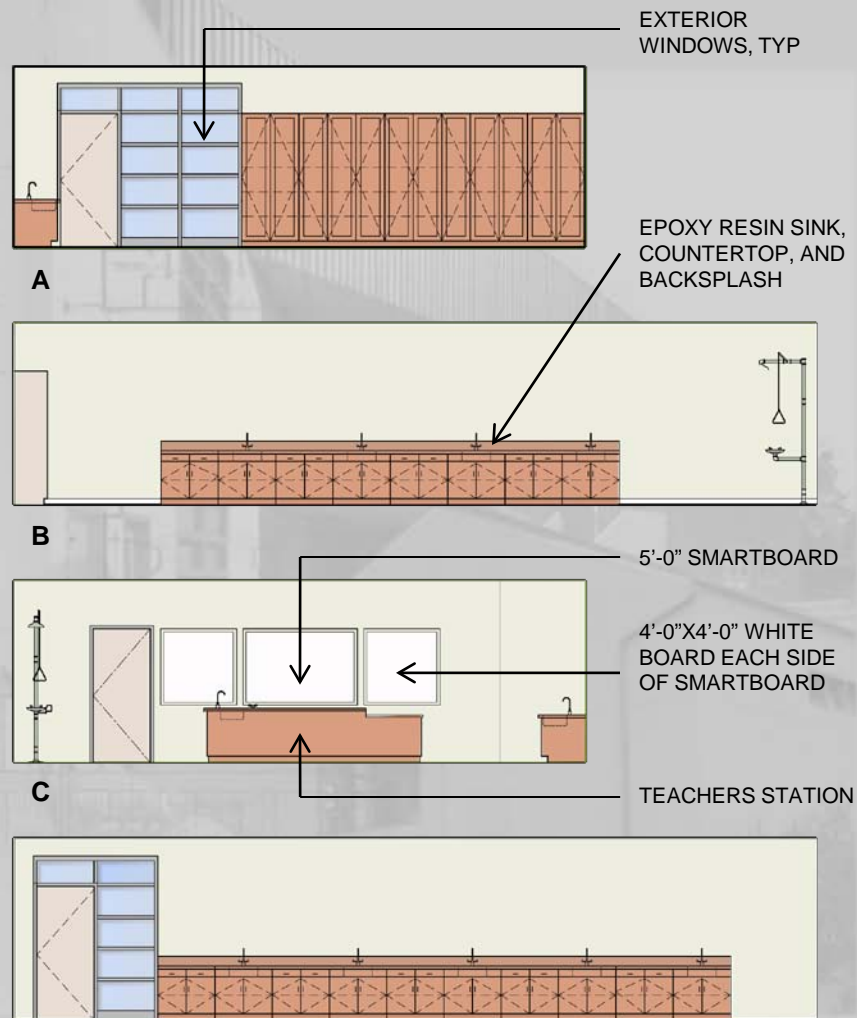
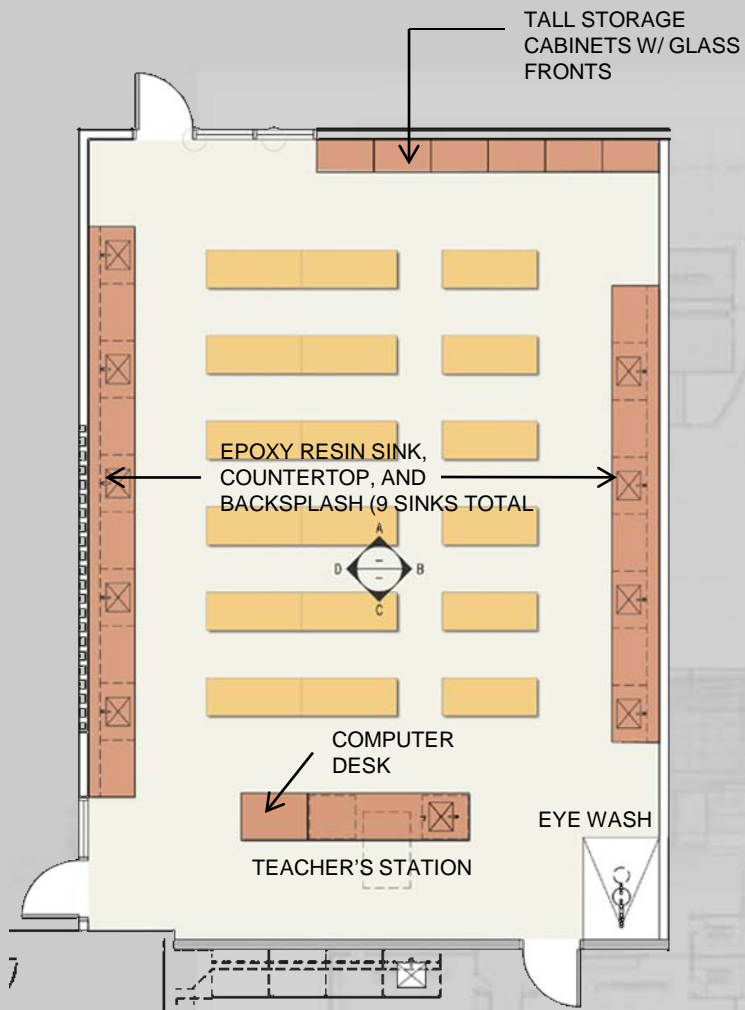
**INTERIOR ELEVATIONS**



# Typical Science Lab

GBA

TUSTIN UNIFIED SCHOOL DISTRICT

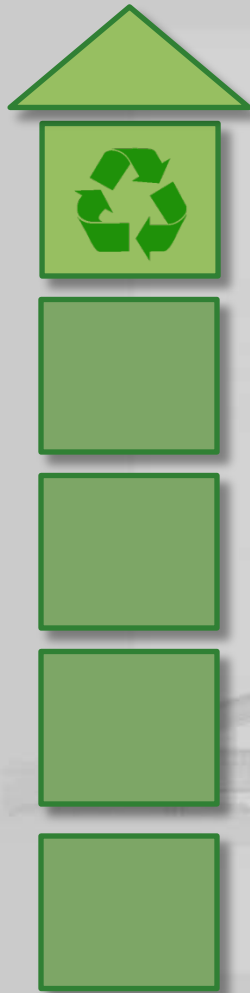




# Green Buildings

GBA

TUSTIN UNIFIED SCHOOL DISTRICT



Daylighting and Solar Tubes

Reduced Environmental Impact

- Recycled Content
  - Ceilings
  - Carpet

Dual Glazed Windows

Water Efficient Plumbing Fixtures

Construction Waste Management



# A.G. Currie Middle School

GBA

TUSTIN UNIFIED SCHOOL DISTRICT

## Schedule

DSA Submittal → January 2011

Construction → June – August 2011

## Estimated Construction Cost

Building 400 = \$ 911,773

Building 500 = \$1,296,842

Building 600 = \$ 911,773

Site = \$ 77,034

TOTAL = \$3,197,421

Total Project Cost = \$4,100,000





# Ghataode Bannon Architects

GBA

TUSTIN UNIFIED SCHOOL DISTRICT



GHATAODE BANNON ARCHITECTS